



OMP Oil palm Management Programs

OMP-AMIS Extension

**OMP
Nursery**

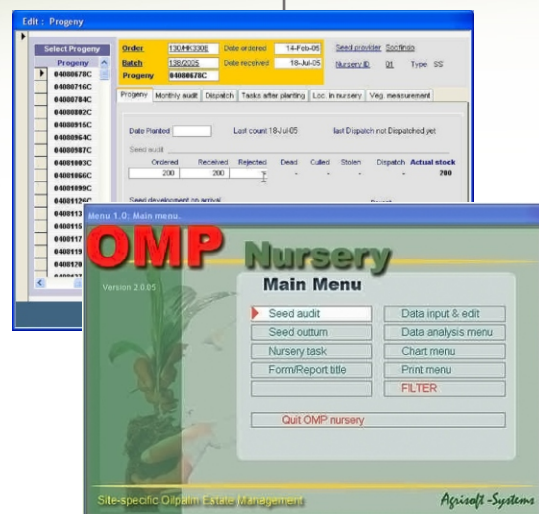
OMP-Nursery

OMP-Nursery is used to manage and track the preparation of seedlings in single and double stage nurseries. The program maintains records of seed orders and stores data on treatment and fate of the planting materials used in the estate. It keeps historic records for 'planting by progeny'.

Benefit:

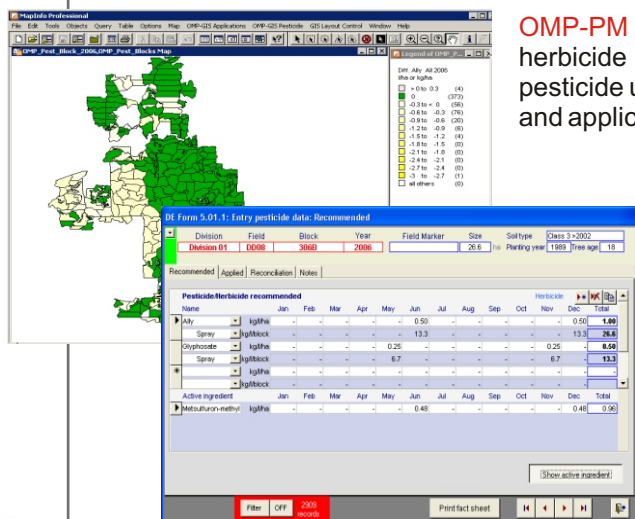
- Monitor seed orders by batch or progeny.
- Create work plans for the preparation of plots, nutrition programs and treatment.
- Track movements of seeds between seed beds and plots.
- Manage seed audits and culling, and monitor losses.
- Track the number and growth stage of seeds available in a nursery and prepare projections of available seeds in upcoming month.

OMP-Nursery is available as a stand-alone application or as part of the OMP-AMIS package.



**OMP
Add-in**

Pesticide use management



OMP-PM is an Add-In module for the planning and monitoring of pesticide and herbicide applications in the estate. The DBMS stores records on recommended pesticide use and actual application and tracks details of the rate, timing, pesticide type and application method for each block.

Benefit:

- Comprehensive documentation of pesticide-use for RSPO and ISO audits and legal compliance.
- Reports show data either by product name or active ingredients.
- Calculated toxicity index ($Ti\ ha^{-1}$, $Ti\ ton\ FFB^{-1}$).
- Fact sheets can be prepared in local language to match company SOP
- Pesticide application and recommendation data can be mapped with OMP-GIS.

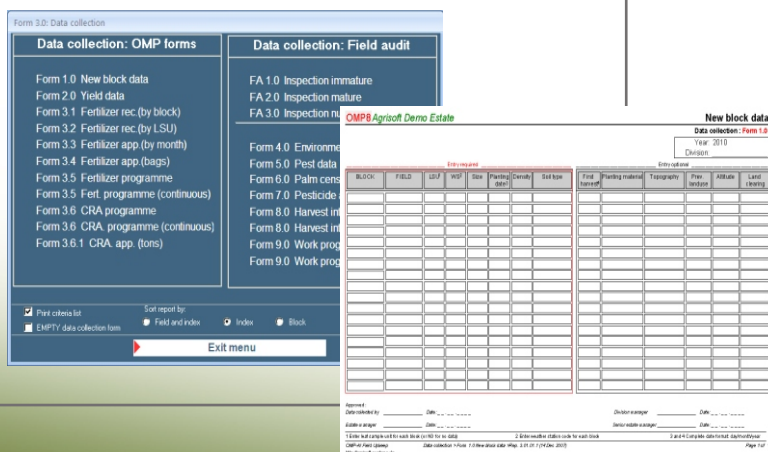
**OMP
Add-in**

Field upkeep

OMP-Field upkeep is a program used to print OMP-AMIS data collection forms and to perform general field assessment surveys, for example, to collect, store and process field survey data on nutrient management and upkeep standards in immature and mature areas.

Benefit:

- Extensive support for data collection.
- User defined scores and categories for field surveys.
- Analysis of field survey scores.
- Progress monitoring of field upkeep tasks and BMP programs.



Software & Add-in modules



Yearly crop budget

OMP-Crop budget is a program to prepare yearly production budgets for the upcoming year on a 'per block' basis. Productivity indicators and yield data from previous years are used for decision support during the preparation of the budget.

Benefit:

- Plan realistic production budgets based on historic yield data and actual site characteristics.
- Plan harvesting labour, milling, transport requirements and corp residue use, based on expected production.
- Set targets and work plans for harvesters and workers.
- Compare budget vs. Actuals.



Black bunch count and yield forecast



OMP-Yield forecast is a program to produce short term yield forecast scenarios. Black bunch surveys in representative blocks are used to calculate the expected yield for the upcoming 4 month.

Benefit:

- Manage black bunch survey data.
- Rolling four-month yield forecast scenario.
- Plan harvesting labour, milling and transport requirements.
- Support CPO trading with accurate predictions.
- Evaluate the quality of forecasts and BBC counts against actual yield and crop budget.
- Long-term data storage and statistics.



Crop loss audit

OMP-Crop loss audit is a program to monitor the estimated crop loss in the field due to sub-standard harvesting. A representative, randomly selected number of blocks is audited after harvesting, and the missed ripe bunches and uncollected loose fruit are used to calculate overall losses for the whole plantation.

Benefit:

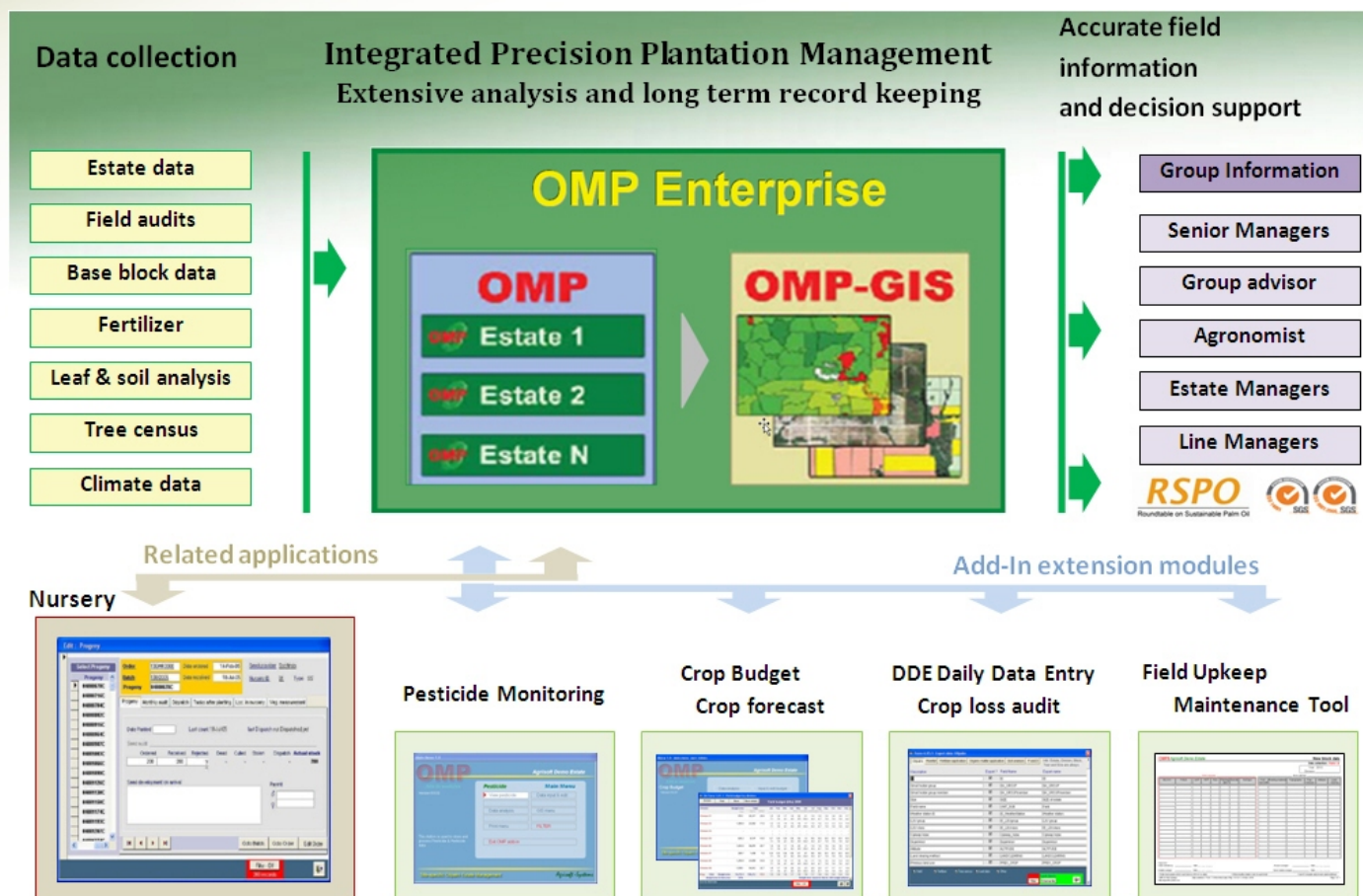
- To minimize crop loss in the field.
- To provide management with a measurement tool to use on a daily basis in order to improve crop collection standards.
- To use the physical crop loss figures to calculate a value of crop lost for each management unit.



System maintenance tools

The **OMP-DBMT** maintenance tools is used to reorganize the block-based estate structure in OMP, e.g. to rename, move, split or combine blocks, divisions, or a whole estate database.

The tool maintains data integrity in the OMP main database and related tables.



How to contact Agrisoft-Systems



PT. Agrisoft Systems Indonesia
www.agrisoft-systems.de

Jl. Prisma 66 A, Pojok C.C,
Yogyakarta 55283, INDONESIA

marketing@agrisoft-systems.de

Tel : (+62) 0274 - 882606

Fax: (+62) 0274 - 882606 Hp : (+62) 0811269438

Technical fact sheet

OMP-AMIS is designed for the MS Windows and MS Office IT environment. To use the programs you need to have the following software installed:

OMP-AMIS® : MSAccess 2000 - 2007

OMP-GIS® : MapInfo™ 8.0 or later

GIS support : MapInfo™, ESRI ArcGIS™ or any comparable GIS software